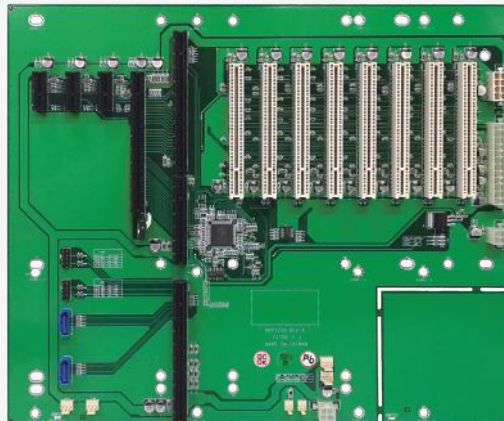


NBP 1358

14-Slot Backplane for 4U Chassis with 1 SHB Slot,
Support PCIe x16/ PCIe x1/ PCI Slot



Main Features

- Greater powers delivery capability, supports high performance
- System host board and add-on card
- Follows PICMG 1.3 mount holes and compatible with 4U chassis
- Supports 1 x PCIe by 16 , 3 x PCIe by1 and 8 x PCI slot
- Supports +12V, -12V, -5V, 3.3V power connector
- Compliance with PICMG1.3 CPU board - PEAK 886VL2, PEAK 887VL2, PEAK 888VL2

Product Overview

The NBP 1358 is a 14-slot backplane for 4U chassis with 1 SHB slot, 3 x PCIe by 1, PCIe x16 and PCI slots. Supports three fan power, power signal LED status , USB 2.0 2x10 pin header and 2 x SATA connector.

It follows PICMG 1.3 platform specifications and supports ATX power supply.

Specifications

System Architecture

- 14-slot backplane

Dimension

- 317 x 268(mm)

Slots

- 1 x PCIe by 16
- 3 x PCIe by1
- 8 x PCI slot (8 x PCI by Pericom PI7C9X112SL bridge , three 5V 32bit PCI slots for full-size boards)

I/O Interface

- USB 2.0 2x10 pin header
- 2 x SATA
- 4 x 3-pin fan
- 2 x 2-pin fan

Power Input

- 1 x 24-pin power connector and 1 x 8-pin power connector

Power Output

- 1 x 4-pin 12V power connector to SBC/SHB

Environment

- Operating temperature: 0°C to 60°C
- Storage temperature: -20°C to 80°C
- Relative humidity: 10% to 90% (Non-condensing)

Certifications

- CE approval
- FCC Class A

Ordering Information

• NBP 1358 (P/N: 79N0135801X00)

PICMG 1.3 14-slot backplane for 4U chassis w/ 1 x SHB slot, 3 x PCIe x1 and 1 x PCIe x16

Dimension Drawing

